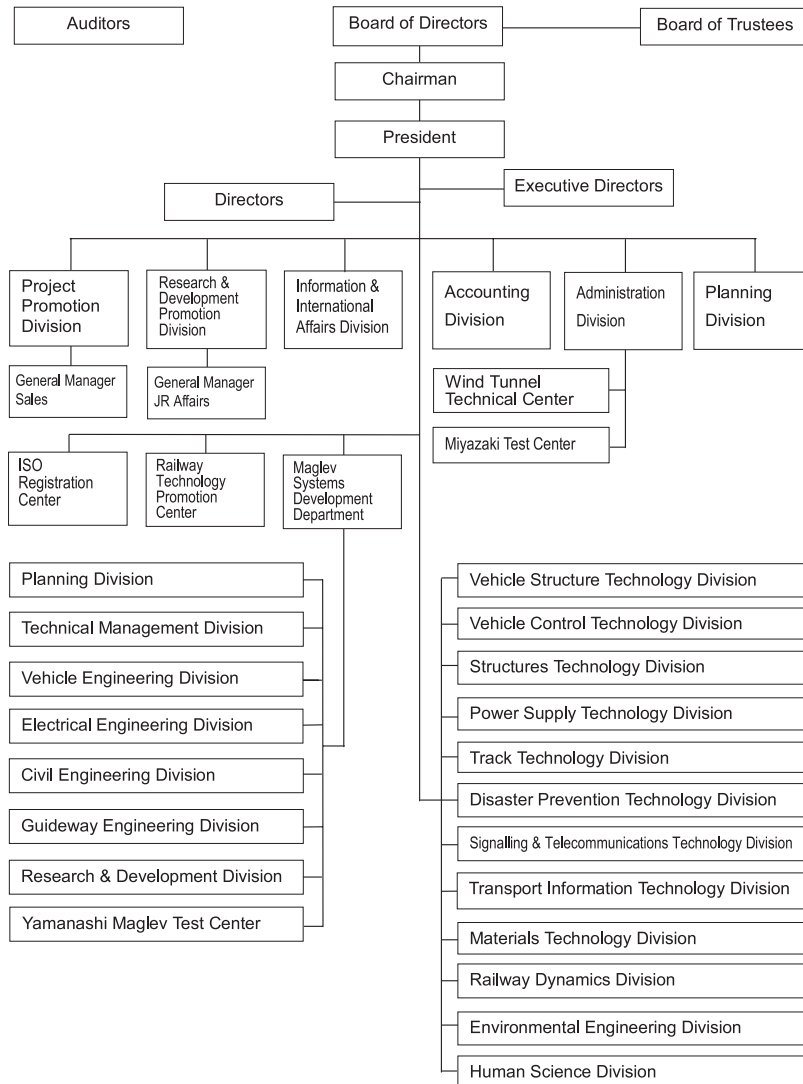


**Table 1. Fact and Figures on Railway Technical Research Institute as of November 2002**

Annual Budget for General Account	130 million US dollars
Personnel	519
Awarded	PhD, 85
Intellectual Property	Patents, 1,786; Utility Models, 51; Designs, 25
Premises	Land, 198,000 m <sup>2</sup> ; Buildings, 66,600 m <sup>2</sup>



**Figure 1.** Organization of Railway Technical Research Institute as of July 1<sup>st</sup>, 2001.

Publisher:  
 Ogino, Takahiko  
 General Manager, Information & International Affairs Division

All your inquiries on the article(s) published in this newsletter to International Affairs at [www-admin@rtri.or.jp](mailto:www-admin@rtri.or.jp) will absolutely be welcome. If you can kindly electronically give us the information on your name, title as well as regular-mail and e-mail addresses so as to make the handling for air-mailing the rest of the newsletters to you easier for us to properly and correctly perform without any difficulty, we would be highly appreciative.

Editor:  
 Sakai, Hiroyuki, PhD  
 Deputy Manager, International Affairs  
 Phone, +81-42-573-7258; Fax, +81-573-7356, E-mail, [www-admin@rtri.or.jp](mailto:www-admin@rtri.or.jp)

