

RTRI's New Master Plan (RESEARCH 2010)

Naoto FUKUMURA

General Manager, Planning Division

A five-year master plan covering the activities of the Railway Technical Research Institute (RTRI) has started. Since April 2010, RTRI's research and other activities have been based on the New Master Plan.

The name of the New Master Plan has been defined as "RESEARCH 2010 – In Pursuit of Sustainable Development for Railways". By reflecting the progress of research and development and changes in the circumstances surrounding railways, this New Master Plan is aimed at effectively promoting activities to fulfil RTRI's commitments to various industries. The Plan aims to ensure that RTRI will carry out a comprehensive range of activities as a railway technical research institute and pursue sustainable railway development. For this purpose, RTRI has set out the following basic policies:

- (1) Creation of new technologies aimed at sustainable development of railways
- (2) Accurate and quick response to demand
- (3) Information transmission and dissemination of results from its activities
- (4) Inheritance of railway technologies and using foundation technologies as the basis for more advanced research
- (5) Demonstration of expertise in research across the whole railway engineering spectrum as a railway engineering group

Moreover, for targets of research and development,

In the area of railways, RTRI will further pursue:

- Improved safety
- Harmony with the environment
- Low cost
- Improved convenience

At the same time, RTRI will expand its specialist area by making greater use of simulation technologies. Figure 1 shows research and development activities in the New Master Plan. Regarding research and development for the future of railways, five major themes have been set, as shown in Fig.2, and several sub-themes composed of multiple research/development topics have been set within the respective themes. Each sub-theme has been determined so as to promote a systematic way of working, according to targets set within the major themes.

For the operational side, RTRI will make special efforts for the inheritance of railway technologies to ensure that knowledge of railway technologies acquired in the past is transferred to today's research teams, so that technical gaps will not open up between old and new generations. In 2010, the first year of the Master Plan, a new organization, the Railway International Standards Center, has been established, and RTRI will support this new

organization.

We, the staff members of RTRI, are determined to make efforts to support and develop the Japanese railway industry and so contribute to the development of Japan's social economy. This role goes back to the principle of establishing the Research Institute when reforms associated with the privatization of JNR were introduced. Now, RTRI is at the stage of implementing wide-ranging advanced research and development, working from basic research to sophisticated applications, while promoting close co-operation with railway companies and enterprises. We ask for your support and encouragement.

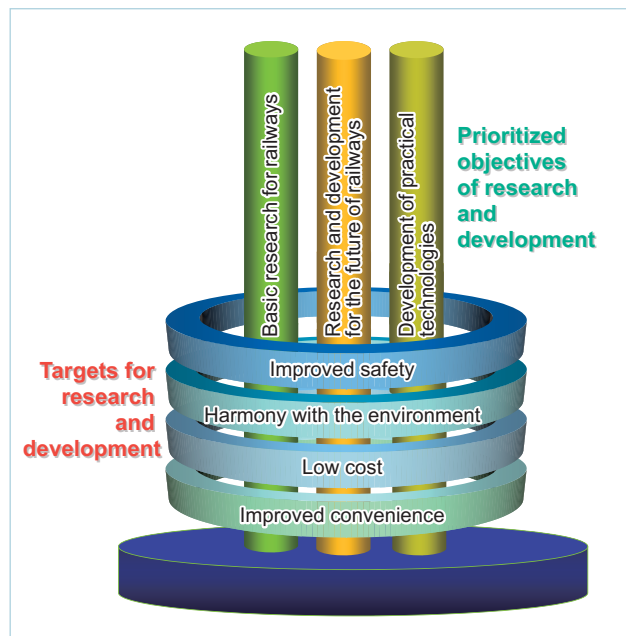


Fig.1 Research and development activities of RTRI

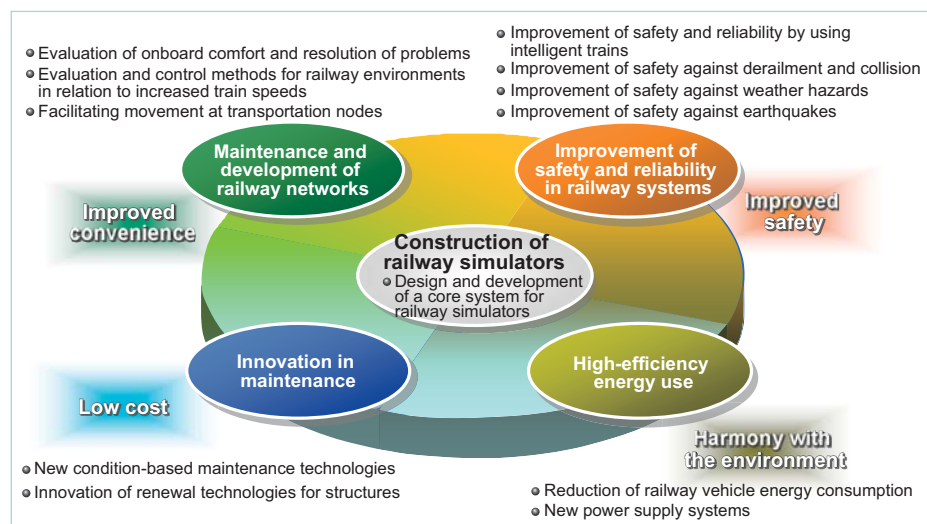


Fig.2 Research and development for the future of railways