

Center for Railway Earthquake Engineering Research Opens

RTRI opened the Center for Railway Earthquake Engineering Research on April 1, 2014. There is increasing concern about the risk of seismic disasters particularly if gigantic earthquakes spread wider and get more complex. In order to achieve safer and more secure railway systems by coping with these issues, the center was established as a unique "base site" for railway-seismic technology in Japan. The center also integrates our research resources on quake-motion, seismic engineering, and early alarming. It incorporates three research groups; Seismic Data Analysis, Soil Dynamics and Earthquake Engineering, and Structural Dynamics and Response Control.



President Norimichi KUMAGAI (right) and Director, Center for Railway Earthquake Engineering Research Yoshitaka MURONO (left)

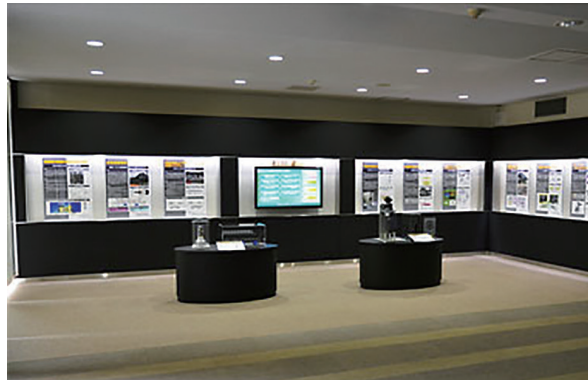
Customers Square Opens

The RTRI opened an exhibit space "Customers Square" on March 25, 2014 in the entrance lobby in order to let visitors, including railway operators, become familiar with the RTRI's research and development results. The Customers Square mainly shows RTRI's technical achievements which are ready to be utilized.



Unveiling Ceremony

Displays include panel presentations and hands-on full-size exhibits. The full-size models currently on display are the vibration suppression control system employing variable vertical dampers and a superconducting cable for railways. The exhibits will be periodically updated in the future.



Customers Square

Visit of a Group Headed by the Councilor for Science and Technology from the Embassy of France

On the last April 21, RTRI invited a party from the French Embassy which was headed by the Councilor for Science and Technology. We welcomed four visitors; Mr. Jacques MALEVAL (Councilor for Science and Technology), Mr. Kaddour RAISSI (Attaché for Science and Technology), Ms. Evelene ETCHEBEHERE (Attaché for Science and Technology), and Ms. Terry OUZARA (Deputy Attaché). After introducing the principal activities of RTRI's research and development program, we exchanged views about energy, environment, and information & communication technology which the Science and Technology Division, Embassy of France is responsible for. We also discussed the general area of transportation including railways. Afterwards, our guests enjoyed a tour of our major R&D facilities.



A group photo with visitors from French Embassy